

<英語版>

Study at  
**Gakushuin University**  
**Wakuwaku Toshima**

# にほんごまなび Japanese Class

Director: Prof. Kaneda, T. & Associate Prof. Nakaue, A. (Faculty of Letters, Gakushuin Univ.),  
Coordinator: Dr. Du, C., Ms. Karakisawa, M., & Ms. Jibiki, M. (International Centre, Gakushuin Univ.)

This program is sponsored by the Agency for Cultural Affairs. It is conducted by Gakushuin University with the support of Toshima-ku.

What would you do if you needed to go to hospital or if you saw a fire?

Do you speak Japanese?

Come to study Japanese with us, and enjoy your life in Japan!



★ You can study Japanese which can be used immediately!

★ You can study from Hiragana and Katakana!

★ You can study basic grammar here!

★ You can make more friends!



## Gakushuin University

North Bldg No.1 Room 303

### AM 10:00-12:30 on Saturdays

Eligibility (1) Those whose age is over 16.

(2) Those who had no Japanese learning experience because of jobs or baby-caring.

(3) Those who are living or working in and around Toshima-ku. (Negotiable)



## Wakuwaku Class

(30 lessons)

### Tuition fee ¥0

Material fee ¥1000/10 Lessons

★ You are welcome to have a look first.

★ You can join anytime through the term.

★ You can bring your children with you.

※ We will take care children who are from 3 years old to the 3rd grade. Negotiable  
You might pay a bit for the babysitter.

### From June 1st to Aug 3rd.2019

- 1** Trying to use Japanese (10 lessons)
- ★ Asking directions
  - ★ Ordering in a restaurant
  - ★ Asking where something you want is etc.



### From Aug 24th to Oct 26th (10 lessons)

- 2** Getting prepared for any emergency
- ★ Going to a hospital
  - ★ Calling a fire truck
  - ★ Asking about something you lost at a police box etc.



### From Nov 9th to Feb 1st.2020

- 3** Expanding your life (10 lessons)
- ★ Trying on the clothes
  - ★ Inviting to the meal
  - ★ Introducing your own culture etc.

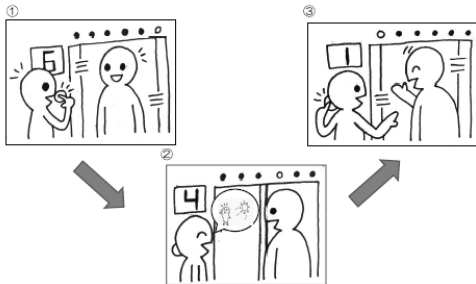


Tutors: Gakushuin University graduates in Japanese Education as a Second Language

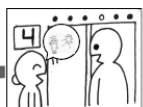
# The material we use in the class!

## Material fee ¥1000/10Lessons **Tuition fee ¥0**

### 1. おはようございます。



Q1. 近所の人に、挨拶したことがありますか？  
Have you ever greeted your neighbors?  
你有跟你的邻居打过招呼吗？ 你有跟你的邻居打过招呼吗？



Yes はい

No いいえ

① 覚えてからチェックしましょう。☑

Mark those you know how to say in Japanese with a check mark. ☑  
如果你知道怎么用日文说请打勾。☑ 如果你记得的同语上打勾标记。☑

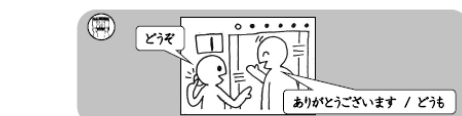
	家族		近所の人
	かぞく		きんじょのひと
	友達		会社の人
	ともだち		かいしゃのひと
	恋人		店の人
	こいびと		みせのひと
	暑い		寒い
	あつい		さむい
	雨		いい天気
	あめ		いいてんき
	雪		風が強い
	ゆき		かぜがつよい
	暖かい		涼しい
	あたたかい		すずしい
	蒸し暑い		
	むしあつい		

② 言ってみましょう

[6] ②

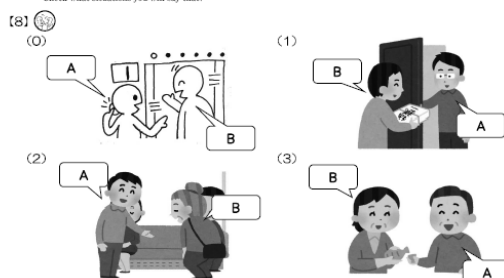


[7] ② Aから1枚、Bから1枚 カードをひいて、あいさつしてみましょう。  
Aから1枚、Bから1枚、カードをひいて、あいさつしてみましょう。  
Greet with each other after pulling a card from A and another from B.



③ どんな場面でも言えますか？見てみましょう。

What situations can you say that? Check what situations you will say that!



ためてみよう

【ためてみよう】の使い方 Way to use "trying to do" 「試してみよう」的使用方法

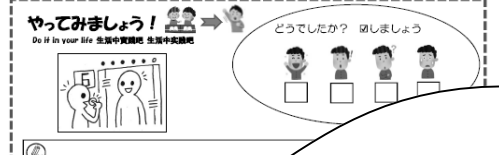
① ② ③ の場面があります。まずAの状況をみます。つぎにBの状況をみます。

① を見たら、言ってみましょう。

There are 3 situations. Watch the video A before you watch video B. When watching video B try to say when you see the mouth mark. 一共有三个状况，每状况先看A的视频，然后再看B的视频，当你看到嘴巴的标记，请尝试说出口。

看三个场景，请先看A的视频，然后再看B的视频，看到嘴巴的标记时，请尝试说出口。

1	A		<a href="https://youtube.com/7uOvGBUJcB">https://youtube.com/7uOvGBUJcB</a>	
	B		<a href="https://youtube.com/2Bz1MRzvCsc">https://youtube.com/2Bz1MRzvCsc</a>	
2	A		<a href="https://youtube.com/sjd9vewu0m0">https://youtube.com/sjd9vewu0m0</a>	
	B		<a href="https://youtube.com/mt9TaWE2LA">https://youtube.com/mt9TaWE2LA</a>	
3	A		<a href="https://youtube.com/wicEOxGxaUw">https://youtube.com/wicEOxGxaUw</a>	
	B		<a href="https://youtube.com/dSGSMNstOI">https://youtube.com/dSGSMNstOI</a>	



<Inquiry and Application>

It is OK to come without application in advance!!

✉: [waku2.nihongo@gmail.com](mailto:waku2.nihongo@gmail.com)

☎: 03-5992-9208 Monday-Friday 10:00-16:00

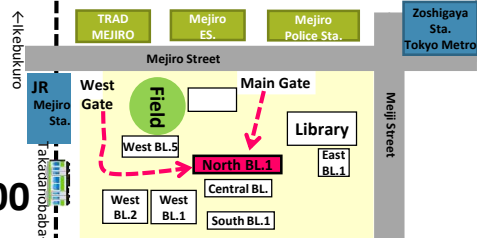
<https://www.facebook.com/waku2.nihongo>

※Check the detailed schedule on our Facebook

Gakushuin University

Wakuwaku Toshima Japanese Class

International Centre, Gakushuin University, Central Bldg 2F, 1-5-1 Mejiro, Toshima-ku, Tokyo.



3min from Mejiro Sta. (JR Yamanote Line)

7min from Zoshigaya Sta.  
(Tokyo Metro Fukutoshin Line)

8min from Kishibojin Sta.  
(Tokyo Toei Arakawa Tram Line)